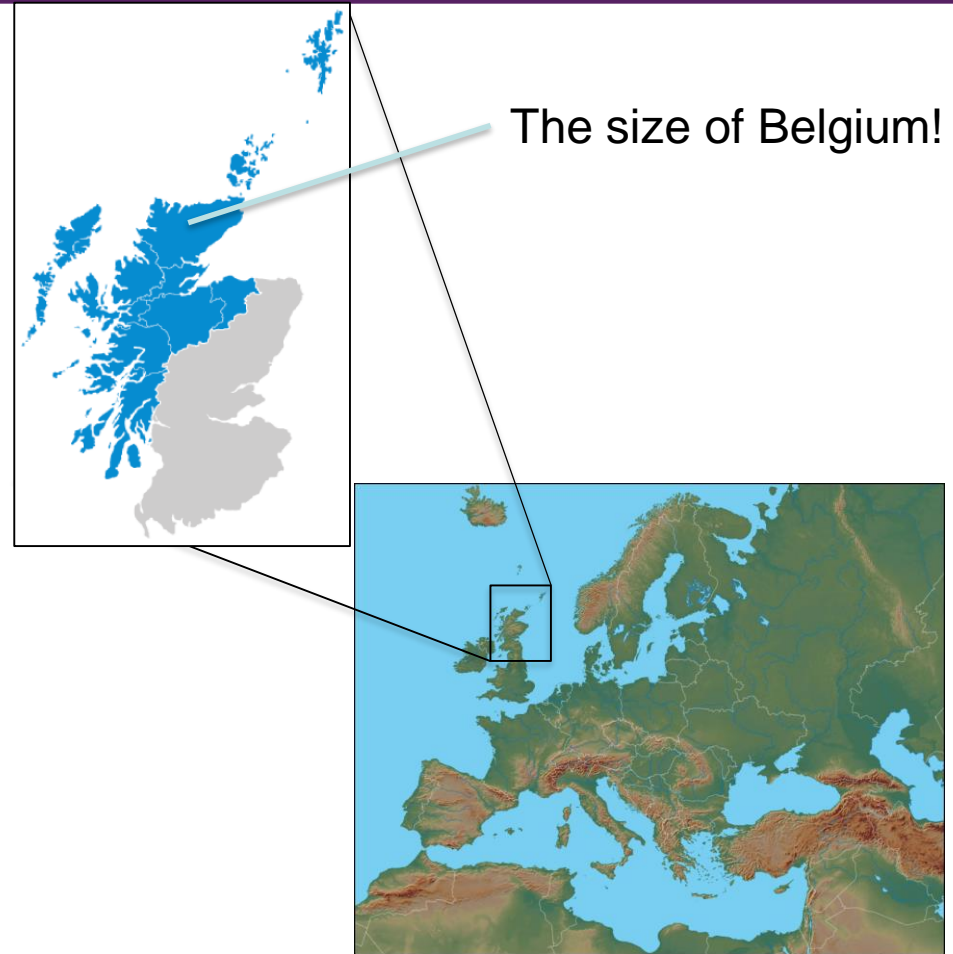


# Marine Renewable Energy in the (University of the) Highlands and Islands

Professor Ben Wilson  
Chair of Energy

# We are different –and proud of it!

- The only University based in the Highlands and Islands of Scotland.
- Established to transform social, economic and cultural prospects through education and research
- Our research is inspired by our land/seascape, culture, heritage and health challenges



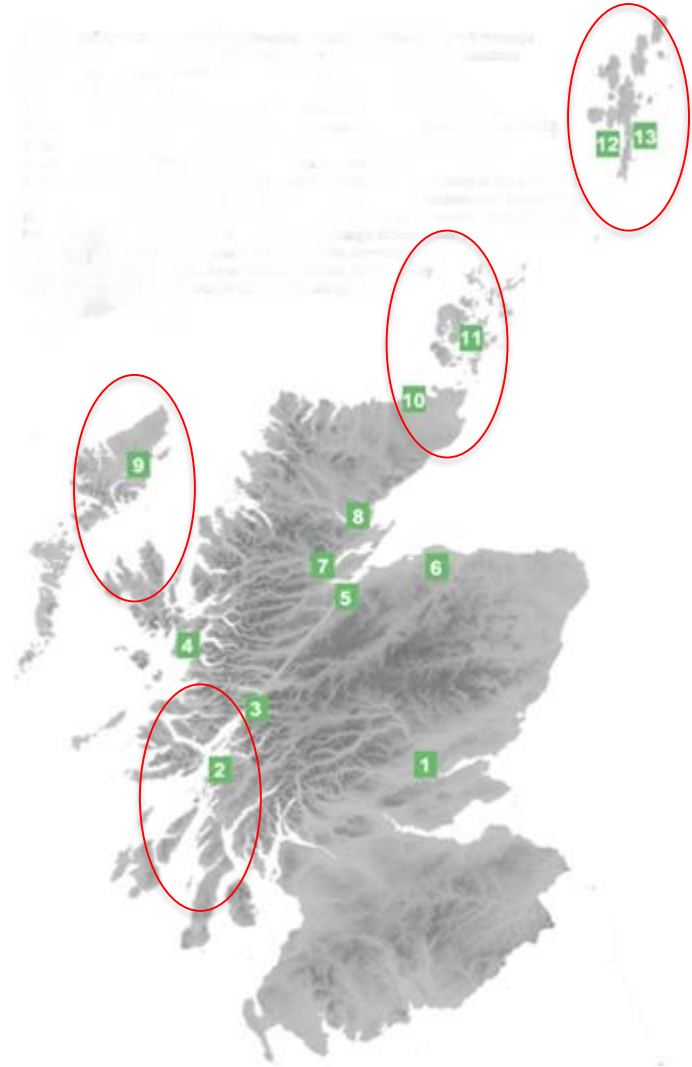
# The Highlands and Islands

## In the Centre of Marine Energy in Europe



# Our research environment

- “Inspired by the natural challenges and opportunities in a unique maritime and upland region”.
- Two of our Research Clusters are of direct relevance to marine energy:
  - Marine and Environmental Science and Engineering
  - Society and Landscape
  - Culture and Heritage
  - Health and Wellbeing



# We couldn't be better located

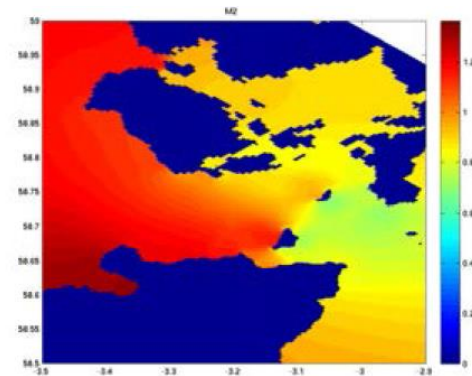
- NAFC Marine Centre (Shetland)





# We couldn't be better located

- Environmental Research Institute (ERI)



Tidal and wave measurements and modelling;  
Environmental assessment, Aquatic and avian impact

# We couldn't be better located

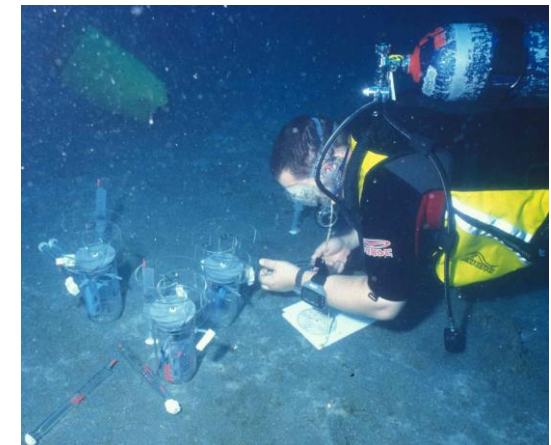
- Lews Castle



Wave modelling and monitoring, including radar measurements; System analysis; Engineering assessment

# We couldn't be better located

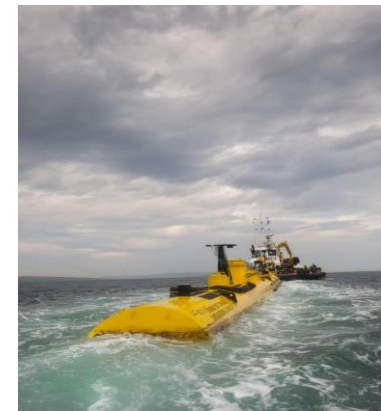
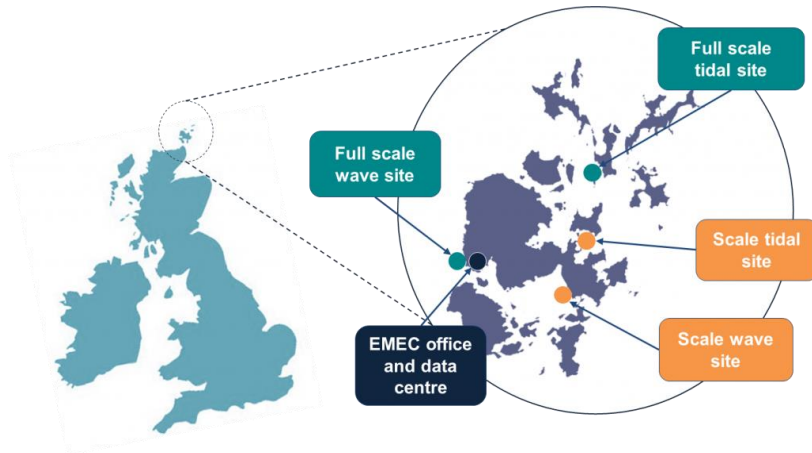
- Scottish Association for Marine Science



150 years of marine science expertise: Modelling and measurement (physical, chemical and biological); Oceanography; Device impact analysis; Coastal social science



# It's not just the university!



# Immediate plans

---

- Marine Science and Engineering for Renewable Energy is central to our future development and embedded in all of our research strategies
- About to launch **50 new fully funded PhD studentships** for UK and EU citizens, of which 20 will be in Low Carbon Energy, prioritising Wave; Tidal and Bio



# Future plans

---

- The university is promoting engagement with international partners for bilateral and multi-lateral research.
- We are looking at a future in which researchers interact with the world, including direct exchange and interaction
- Our future is in Europe and the world with no thoughts on closing doors to cooperation with our international friends, new and old



# The sun is rising: who wouldn't want to be here?

---

